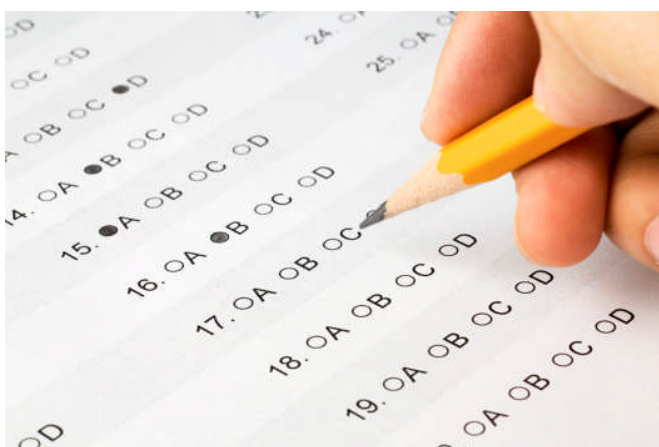




Immaculate High School **EXPLORE ENTRANCE EXAM**



Saturday, October 24, 2009
8:30 a.m. – 12:00
and
Saturday, November 14, 2009
8:30 a.m. – 12:00

(Only students who take exam on October 24th or November 14th are eligible for Marian and Principal Awards)

To register for the exam, call 203-744-1510 ext. 132 to reserve a spot. Then, submit a check for \$50.00 (exam fee) made payable to “Immaculate High School” along with a completed **Application for Admission**. Exam fee and application may be sent or delivered to:

Immaculate High School
Attn: Carol Stone, Admissions Coordinator
73 Southern Boulevard
Danbury, CT 06810

For more information about the EXPLORE exam or to check out some sample questions visit www.explorestudent.org
On the day of the exam, please arrive by 8:15 a.m. Be sure to bring a few #2 pencils and a basic 5-function calculator.

**All completed applications must be received at
Immaculate High School
no later than November 14, 2009**

For more information on admission to Immaculate High School, please visit the **Admissions** page at
www.ImmaculateHS.org.

FINANCIAL AID PROCESS

All families of incoming students who are requesting financial aid must complete a Private School Aid Service (PSAS) application to determine eligibility for financial assistance. All financial information you provide is strictly confidential. Financial aid is given to those students that PSAS determines to be eligible. This information is also strictly confidential.

PSAS applications for prospective incoming freshmen must be completed and submitted directly to PSAS no later than November 14, 2009.

A Private School Aid Service (PSAS) application can be accessed online at www.ImmaculateHS.org >Admissions>PSAS Application. Or, go to www.psas.org and submit your application electronically.

The Immaculate High School PSAS code is 3002.

FRESHMEN SCHOLARSHIP OPPORTUNITIES

A summary of scholarship opportunities for prospective incoming freshmen is available online at www.ImmaculateHS.org Some scholarships require completion of a PSAS application.